

STRUT CLAMPS



Clamp With Cushion

2501 - 2587

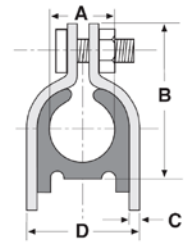


Figure Number	O.D. Size A	Nom. Tube Size	B		C		D		Standard Package	Wt. Each	
										Lbs.	kg
2501	1/4 (6.35)	1/8 (3)	1 1/16 (26.99)	.060 (1.52)	1/2 (12.70)	30	0.12 (0.05)				
2502	3/8 (9.53)	1/4 (6)	1 1/4 (31.75)	.060 (1.52)	5/8 (15.88)	30	0.13 (0.06)				
2503	1/2 (12.70)	3/8 (10)	1 3/8 (34.93)	.060 (1.52)	3/4 (19.05)	30	0.13 (0.06)				
2504	5/8 (15.88)	1/2 (15)	1 1/2 (38.10)	.060 (1.52)	7/8 (22.23)	20	0.15 (0.07)				
2505	3/4 (19.05)	5/8 (20)	1 3/4 (44.45)	.075 (1.91)	1 1/8 (28.58)	20	0.21 (0.09)				
2506	7/8 (22.23)	3/4 (25)	1 7/8 (47.63)	.075 (1.91)	1 1/4 (31.75)	20	0.22 (0.10)				
2507	1 1/8 (28.58)	1 (32)	2 1/16 (52.39)	.075 (1.92)	1 1/2 (38.10)	10	0.29 (0.13)				
2508	1 3/8 (34.93)	1 1/4 (40)	2 7/16 (61.91)	.075 (1.91)	1 3/4 (44.45)	10	0.33 (0.15)				
2509	1 5/8 (41.28)	1 1/2 (50)	3 (76.20)	.105 (2.67)	2 1/4 (57.15)	10	0.42 (0.19)				
2510	2 1/8 (53.98)	2 (65)	3 3/8 (85.73)	.105 (2.67)	2 3/4 (69.85)	10	0.50 (0.23)				
2511	2 5/8 (66.68)	2 1/2 (80)	3 7/8 (98.43)	.105 (2.67)	3 1/4 (82.55)	10	0.62 (0.28)				
2512	3 1/8 (79.38)	3 (90)	4 5/16 (109.54)	.105 (2.67)	3 3/4 (95.25)	10	0.66 (0.30)				
2514	4 1/8 (104.78)	4 (100)	5 1/2 (139.70)	.125 (3.18)	4 3/4 (120.65)	10	0.88 (0.40)				

Figure Number	O.D. Size	Max. Rec. Load					
		X		Y		Z	
		Lbs.	kN	Lbs.	kN	Lbs.	kN
2501	1/4 (6.35)	50	(0.22)	50	(0.22)	400	(1.78)
2502	3/8 (9.53)	50	(0.22)	50	(0.22)	400	(1.78)
2503	1/2 (12.70)	50	(0.22)	50	(0.22)	400	(1.78)
2504	5/8 (15.88)	50	(0.22)	50	(0.22)	400	(1.78)
2505	3/4 (19.05)	75	(0.33)	75	(0.33)	600	(2.67)
2506	7/8 (22.23)	75	(0.33)	75	(0.33)	600	(2.67)
2507	1 1/8 (28.58)	75	(0.33)	75	(0.33)	600	(2.67)
2508	1 3/8 (34.93)	75	(0.33)	75	(0.33)	600	(2.67)
2509	1 5/8 (41.28)	75	(0.33)	75	(0.33)	600	(2.67)
2510	2 1/8 (53.98)	125	(0.56)	125	(0.56)	800	(3.56)
2511	2 5/8 (66.68)	125	(0.56)	125	(0.56)	800	(3.56)
2512	3 1/8 (79.38)	125	(0.56)	125	(0.56)	800	(3.56)
2514	4 1/8 (104.78)	150	(0.67)	200	(0.89)	1000	(4.45)

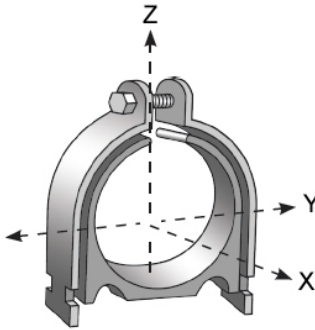
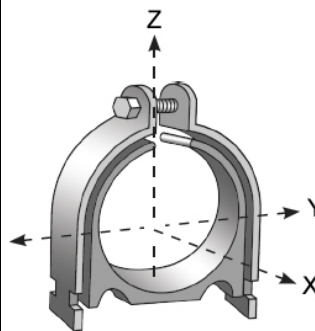


Figure Number	Nominal Pipe Size	O.D. Size A		B		C		D		Standard Package	Wt. Each	
											Lbs.	kg
2574	1/4 (5)	.540 (13.72)	1.41 (35.81)	.075 (1.91)	.91 (23.11)	30	.16 (0.07)					
2575	3/8 (10)	.675 (17.15)	1.59 (40.39)	.075 (1.91)	1.07 (27.18)	30	.17 (0.08)					
2576	1/2 (15)	.840 (21.34)	1.91 (48.51)	.075 (1.91)	1.45 (36.83)	30	.21 (0.10)					
2577	3/4 (20)	1.050 (26.67)	2.16 (54.86)	.105 (2.67)	1.79 (45.47)	10	.31 (0.14)					
2578	1 (25)	1.315 (33.40)	2.75 (69.85)	.119 (3.02)	2.22 (56.39)	20	.43 (0.20)					
2579	1 1/4 (32)	1.660 (42.16)	3.03 (76.96)	.119 (3.02)	2.47 (62.74)	10	.48 (0.22)					
2580	1 1/2 (40)	1.900 (48.26)	3.28 (83.31)	.119 (3.02)	2.47 (62.74)	10	.52 (0.24)					
2581	2 (50)	2.375 (60.33)	3.78 (96.01)	.119 (3.02)	3.22 (81.79)	10	.61 (0.28)					
2582	2 1/2 (65)	2.875 (73.03)	4.27 (108.46)	.119 (3.02)	3.72 (94.49)	10	.63 (0.29)					
2583	3 (80)	3.500 (88.90)	4.91 (124.71)	.119 (3.02)	4.36 (110.74)	10	.72 (0.33)					
2584	3 1/2 (90)	4.000 (101.60)	5.53 (140.46)	.119 (3.02)	4.97 (126.24)	10	.88 (0.40)					
2585	4 (100)	4.500 (114.30)	6.03 (153.16)	.119 (3.02)	5.47 (138.94)	10	.94 (0.43)					
2586	5 (125)	5.563 (141.30)	7.03 (178.56)	.119 (3.02)	6.47 (164.34)	10	1.22 (0.55)					
2587	6 (150)	6.625 (168.28)	8.03 (203.96)	.119 (3.02)	7.47 (189.74)	10	1.44 (0.65)					

Figure Number	O.D. Size	Max. Rec. Load					
		X		Y		Z	
		Lbs.	kN	Lbs.	kN	Lbs.	kN
2574	.540 (13.72)	50	(0.22)	50	(0.22)	400	(1.78)
2575	.675 (17.15)	75	(0.33)	75	(0.33)	600	(2.67)
2576	.840 (21.34)	75	(0.33)	75	(0.33)	600	(2.67)
2577	1.050 (26.67)	75	(0.33)	75	(0.33)	600	(2.67)
2578	1.315 (33.40)	75	(0.33)	75	(0.33)	600	(2.67)
2579	1.660 (42.16)	125	(0.56)	125	(0.56)	800	(3.56)
2580	1.900 (48.26)	125	(0.56)	125	(0.56)	800	(3.56)
2581	2.375 (60.33)	125	(0.56)	125	(0.56)	800	(3.56)
2582	2.875 (73.03)	125	(0.56)	125	(0.56)	800	(3.56)
2583	3.500 (88.90)	150	(0.67)	200	(0.89)	1000	(4.45)
2584	4.000 (101.60)	150	(0.67)	200	(0.89)	1000	(4.45)
2585	4.500 (114.30)	150	(0.67)	200	(0.89)	1000	(4.45)
2586	5.563 (141.30)	150	(0.67)	200	(0.89)	1000	(4.45)
2587	6.625 (168.28)	150	(0.67)	200	(0.89)	1000	(4.45)



CLAMP MATERIAL:

Low carbon steel

CUSHION MATERIAL:

Multi-Flex TES A9110 EV1 Black, in accordance with ASTM D4474 TES 0130 A90000

TEMPERATURE RANGE:

-65°F to 275°F
(-54°C to 135°C)

FINISH:

Western gold

ORDERING:

Specify figure number and O.D. size.

Available in stainless steel.

To order, specify 304 or 316 and add suffix SS to figure number.

Price on request.

Unless otherwise specified, all dimensions on drawings and in charts are in inches and dimensions shown in parentheses are in millimeters.